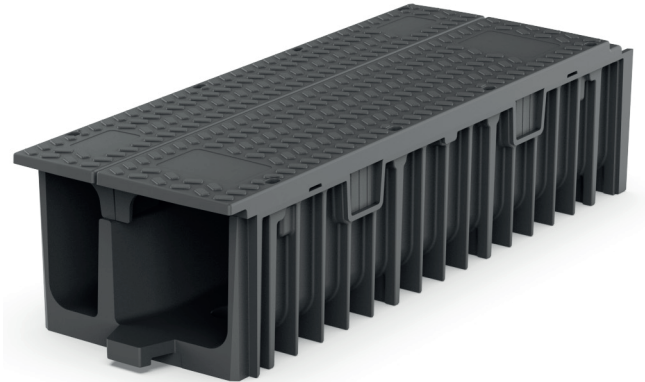


TROF W is provided as a base unit with one divider and two separate lids.

PRODUCT INFORMATION	
WEIGHT	16.3kg
EXTERNAL DIMENSIONS (mm)	275H, 387W, 1075L
INTERNAL DIMENSIONS (mm)	200H, (MV) 187.5W, (FO) 98.5W, 1000L
MATERIAL	Recycled high density polyethylene
FIRE RETARDANT CHARACTERISTICS	Meets NFPA requirements for rail in non-enclosed environment
MANUFACTURING PROCESS	Injection molded
BEND / TILT CHARACTERISTICS	Designed into the product for ease of install
PRODUCT BENEFITS	
LIGHTWEIGHT	Higher installation rates / lower installation costs
MATERIAL HANDLING	Reduced site & HiRail handling
STRENGTH	Durable and long-lasting in the rail environment
SECURITY	Anti-vandal and anti-theft features
QUALITY	ISO 9001 Injection molding process
ENVIRONMENTALLY FRIENDLY	Recycled polymer material / off-cut recovery scheme
PRODUCT INTERFACES	With other Trotrof Composites products and concrete troughs
HEALTH, SAFETY & ENVIRONMENT COMPARISON	
TROTROF W	CONCRETE TROUGH
ONE PERSON LIFT	Three person lift
CUT USING STANDARD TOOLS	Cut with a concrete saw
NO DUST OR NOISE PRODUCED	Dust and noise produced
SMOOTH SURFACE FINISH	Abrasive surface finish
MEDIUM CARBON FOOTPRINT	High carbon footprint
RECYCLABLE	Cannot be recycled



SUSTAINABLE



LIGHTWEIGHT



STRONG



PERFORMANT



DURABLE



MADE IN CANADA



ADD-ONS